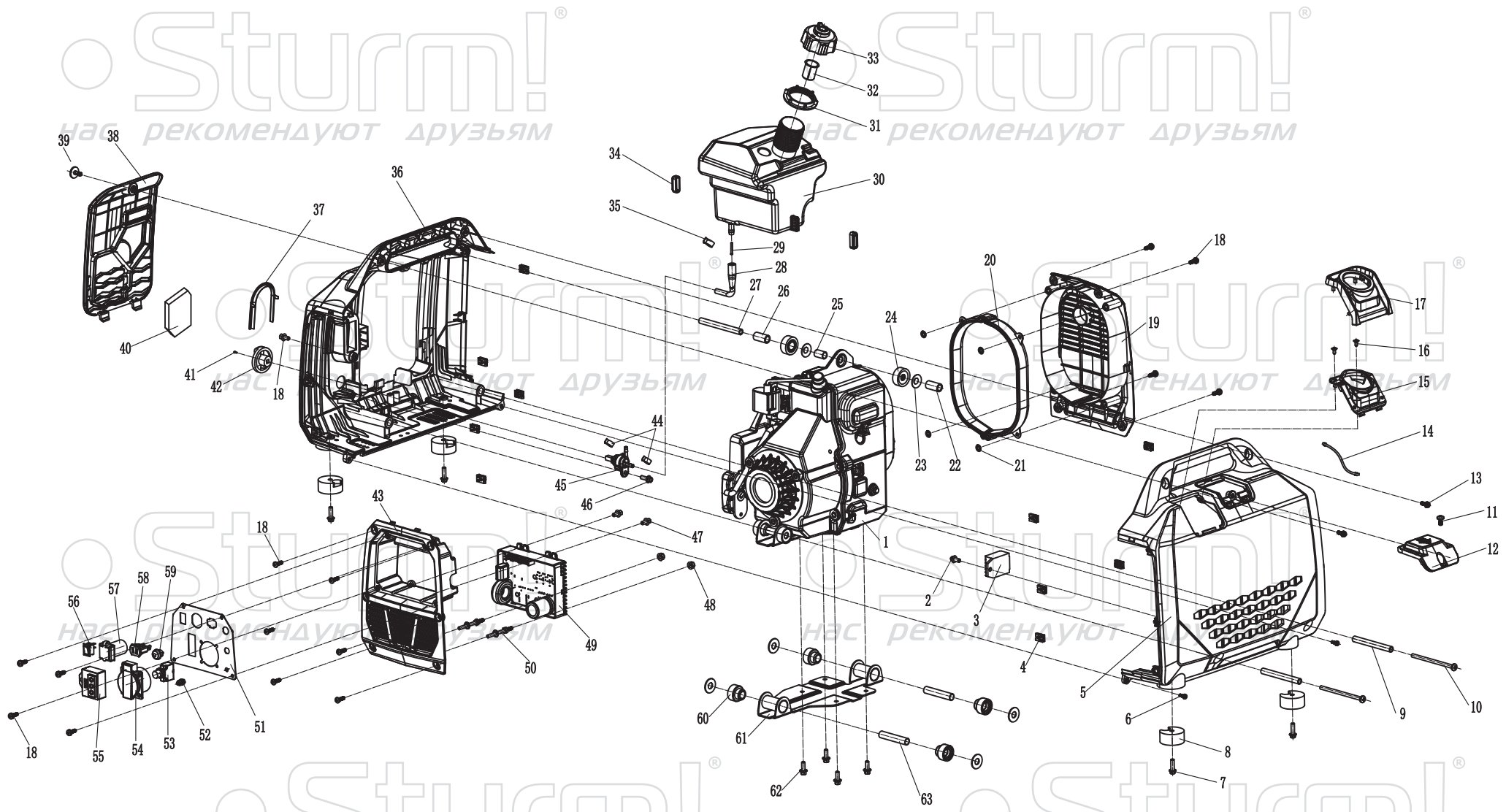


PG1200Ci

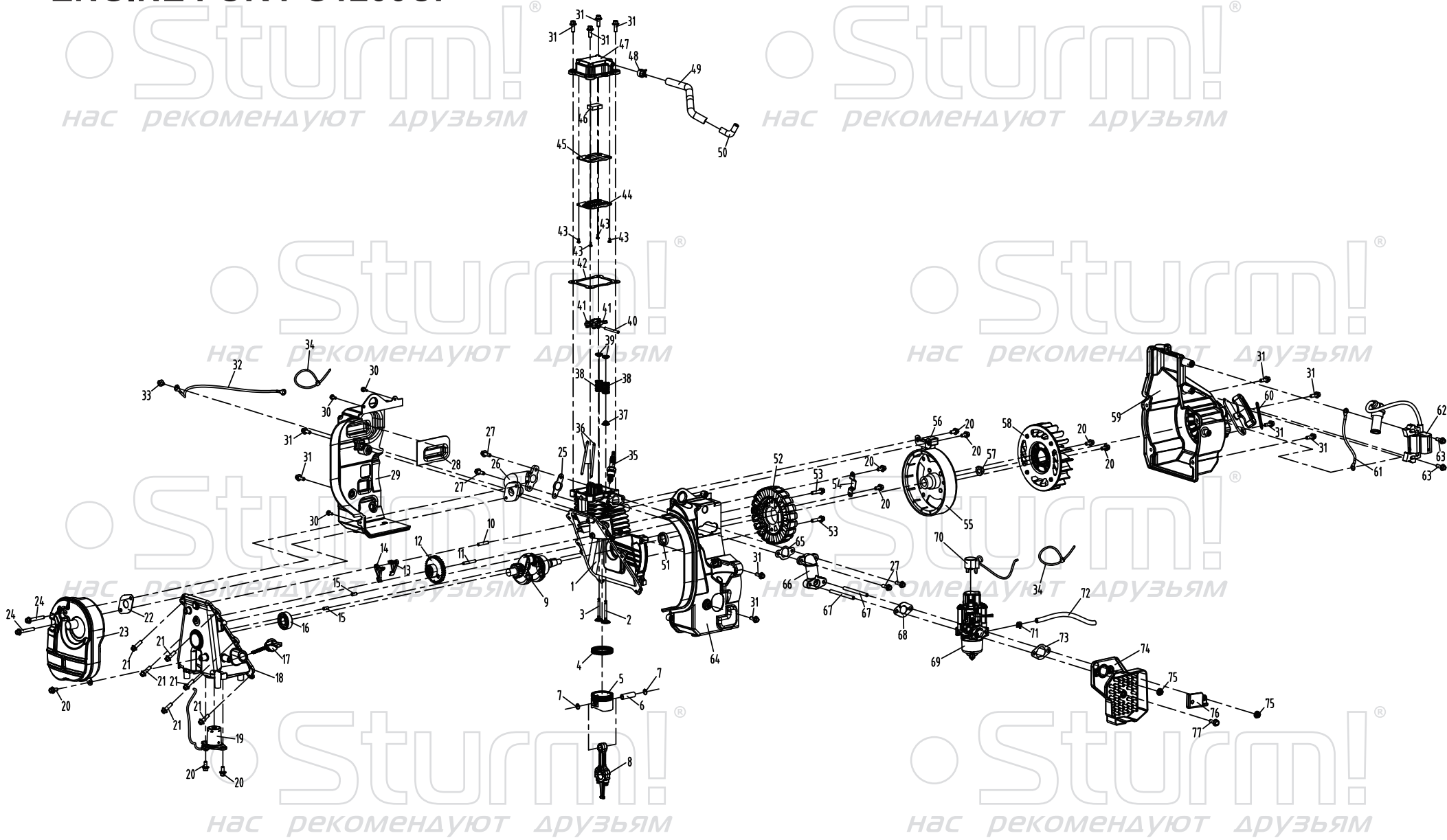


PG1200Ci

NO.	DESCRIPTION	SPEC.	NO.	DESCRIPTION	SPEC.
1	engine		33	Fuel tank cap	
2	Hexagonal flange bolt		34	Fuel tank shock absorber sleeve	
3	DC module		35	Pipe clamp	φ 11
4	Clamp nut		36	Handle	
5	Handle		37	Cover plate decorative ring	
6	Cross-slot head screws, flat washers and spring washers combination		38	Cover plate	
7	Hexagonal flange bolt		39	Slotted head screws without protruding from the screws	M6×16
8	Rack shock absorber pad		40	Air filter filter element	
9	O-ring	φ 10× φ 7×90	41	Cross-slot head screws, flat washers and spring washers combination	M4×12
10	Stator bolts	M6×105	42	Oil switch handle	
11	Slotted pan-head screws that do not come out of the holes	M6×12	43	Panel rear cover shell	
12	Cover plate		44	Oil pipe clamp	φ 8
13	Hexagonal head shaft shoulder bolt	M5×16	45	Oil switch assembly	
14	Spark plug cover anti-loosening chain		46	Hexagonal flange surface bolts	
15	Cover plate		47	Hexagonal flange surface bolts	
16	Cross-slot pan-head self-tapping screws	ST4×12	48	Hexagonal flange surface nuts	
17	Damping and buffering rubber		49	Inverter	
18	Cross-slot head screws, flat washers and spring washers combination	M5×16	50	Double-headed bolt	
19	Silencer side cover		51	Control Panel	
20	Damping and buffering rubber		52	Grounding bolt	
21	Internal serrated locking washer	φ 5×14×0.5	53	Overload protector	
22	O-ring	φ 10× φ 7×35	54	Europe socket	
23	Flat washer	φ 26× φ 11×1.5	55	Igniter body	
24	Frame shock absorber pad	φ 32*12.5mm	56	Switch assembly	
25	O-ring	φ 10× φ 7×20	57	USB	
26	O-ring	φ 10× φ 7×17	58	DC socket	
27	O-ring	φ 10× φ 6×97	59	Reset button	
28	Fuel - Oil Pipe (Single Piece)		60	Damping and buffering rubber	
29	Fuel Filter		61	Base plate	
30	Fuel Tank Body		62	Hexagonal flange surface bolt	
31	Cover plate		63	O-ring	φ 14× φ 11.5×63
32	Fuel filter				

PG1200Ci-EX-CK03P2026036T

ENGINE FOR PG1200Ci



ENGINE FOR PG1200Ci

NO.	DESCRIPTION	SPEC.	NO.	DESCRIPTION	SPEC.
1	Crankcase		40	Valve rocker shaft	φ 4×44
2	Intake valve		41	Valve rocker	
3	Exhaust valve		42	Cylinder head gasket	
4	Combination of piston rings	φ 45 1×1×2	43	Small disc head screw with cross slot	M3×6
5	Piston	φ 45 1×1×2	44	Cylinder head breathing plate	
6	Piston pin	φ 10× φ 7×32.6	45	Inner gasket of cylinder head cover	
7	Piston pin retaining ring	φ 12	46	Oil filter screen	
8	Connecting rod	φ 15× φ 10×61	47	Cylinder head cover assembly	
9	Crankshaft component		48	Pipe clamp	φ 12
10	Valve rocker shaft	φ 5×27	49	Exhaust pipe	φ 9.5*13.5mm
11	Camshaft core	φ 5*33	50	Exhaust pipe joint	φ 5× φ 8
12	Camshaft component		51	Oil seal	
13	Valve rocker		52	Magnetic motor stator assembly	
14	Valve rocker		53	Hexagonal flange bolt	M6×25
15	Locating pin shaft	φ 5*12	54	Pressure plate	
16	Deep groove ball bearing		55	Magnetic motor rotor assembly	
17	Oil dipstick		56	Trigger	
18	Crankcase cover		57	Hexagonal flange nut - fine thread	M10×1.25
19	Oil sensor		58	Impeller	
20	Hexagonal flange bolt	M6×12	59	Hand starting component (starter assembly)	
21	Hexagonal flange bolt	M6×20	60	Clamp	
22	Muffler gasket		61	Main grounding wire	
23	Muffler		62	Igniter	
24	Hexagonal flange bolt	M6×40	63	Hexagonal flange bolt	M6×18
25	Exhaust port gasket		64	Box air deflector	
26	Exhaust pipe		65	Intake port gasket	
27	Hexagonal flange bolt	M6×18	66	Air filter connection pipe	
28	Insulation foam		67	Double-ended screw stud	M6×75
29	Box air deflector		68	Fuel injection pump gasket	
30	Cross-slot head screws, flat washers and spring washers combination	M4×12	69	Fuel injection pump component	
31	Hexagonal flange bolt	M6×16	70	Stepper motor	
32	Main grounding wire		71	Oil pipe clamp	φ 8
33	Hexagonal flange bolt	M5×8	72	Oil pipe	φ 4.5× φ 8.5
34	Zip tie		73	Air filter gasket	
35	Spark plug		74	Air filter housing	
36	Valve tappet	Φ 3.5× Φ 4×72	75	Hexagonal flange face nut	M6
37	Oil shield		76	Exhaust baffle	
38	Valve spring	φ 12.3x φ 1.6x21.4	77	Hexagonal flange face bolt - enlarged series	M6×16
39	Intake valve spring seat				